

SHEFFIELD HALLAM STUDENTS' UNION

STUDENT GROUPS NEWSLETTER



FIND YOUR PLACE AT HALLAM

IN THIS ISSUE

Society Spotlight | page 2

Union Notices | page 3

Give it a Go! | page 4

Student Rights | page 5

Committee Corner | page 5

Wellbeing | page 8

Meet the Team | page 7



**SOCIETIES
ELECTIONS
2023**

SOCIETY BY ELECTION

Thank you to everyone who participated in the Society by election!

It was great to see so many passionate candidates for the vacant roles in some of your Committees and even better to see such a great voter turn out!

The next election will be in March/April for the 2024/25 Committees.

If your Society still has vacancies, the Committee can get in touch with the team for more info on next steps.

Think something is missing from this issue? Got an event coming up you want to advertise? Get in touch with the Student Groups team at activitiesadmin@shu.ac.uk

SOCIETY SPOTLIGHT

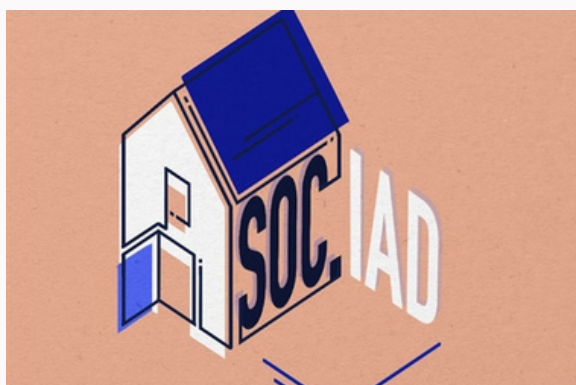
SOCIETY OF THE MONTH, NEW SOCIETIES AND MORE!



Society of the Month

HUP got really involved in the volunteering Harvest Campaign, donating many items to the Archer Project supporting the homeless in Sheffield.

Want to be the next Soc of the Month? Let us know what you've been up to!



NEW SOCIETY:

SOC.IAD

Soc.IAD is a Society that exists for all students passionate about Interior Architecture! [Check them out here!](#)



NEW SOCIETY:

DANCE SOCIETY

Sheffield Hallam Dance Society promotes dance, offering various styles, welcomes all skill levels, no auditions, no competitions. Join us for fun and inclusivity! [Check them out here!](#)

STUDENTS' UNION NOTICES



VOLUNTEERING OPPORTUNITY: SHOEBOX APPEAL 2023

It's that time of year again! Hallam Students' Union are once more teaming up with Sheffield Shoebox Appeal!

Christmas can be a very joyous time of year, but it can be very lonely as well. Sheffield Shoebox Appeal work closely with charities and service providers to provide a bit of Christmas cheer for the homeless, people in hostels, temporary accommodation and safe refuges, and the socially isolated or elderly. Most of them have access to basic items like toothbrushes/paste, toiletries and food, but don't have those little luxuries we all appreciate. For many of them this will be the only Christmas present they get, so we want to make sure our boxes are full of treats and luxury items.

We need your help with made up shoeboxes for our different categories and loose items to help us enrich boxes where needed, and also to make up any we are short of.

All shoeboxes will be donated to adults, so no children's items please! If you don't have a shoebox, you can collect pre-wrapped boxes from HUBS.

Can't fill a shoebox on your own? You can team up with friends to create a box together - or we can accept loose items donations.

For more information (including what items to donate or where to drop off your boxes) please visit the SU website [here](https://www.hallamstudentsunion.com).

GIVE IT A GO!

Check out the full list of activities in the Give it a Go programme here:
www.hallamstudentsunion.com/get_involved/giveitago/

Our picks



AFRICAN DRUMMING

Join us in this fun and energetic workshop where you will learn the technique and culture of Western and Southern African drumming - all materials included and no experience required!



TRIP TO LINCOLN

Sheffield is home, but lets stretch our legs and explore a new city for the day! Join the Give It A Go team on our trip to Lincoln.



MENTAL HEALTH FIRST AID

Gain the knowledge to identify suspected mental health conditions, and the skills to start a conversation and be able to signpost the person towards professional help. A great way to begin becoming qualified in Mental Health support.

STUDENT RIGHTS AND CAMPAIGNS

BAME Ambassador update:

Research findings reveal a significant degree awarding gap at Sheffield Hallam University, evident in disparities in degree attainment, pass rates, and overall academic success. Alarmingly, only around 20% of students are aware of this issue. As BAME ambassadors, we are planning several intervention programs to create awareness among students around the Degree awarding gap issue and how students can get involved to create a more inclusive, equitable, and supportive university environment. We aim to enhance academic outcomes for BAME students, improving pass and graduation rates. As part of our strategy, consultations are in progress with the university to advocate for a standardized framework across all departments, building upon the efforts of the Manifest and Diversity group.

We have also proposed an Anti-Racism Student Union Policy that aims to address historical disparities faced by individuals from minoritized backgrounds, impacting education and employment experiences. The policy emphasizes the need for active anti-racist initiatives, going beyond a passive not-racist stance, to create an inclusive campus environment. It asserts that racial discrimination perpetuates inequality and injustice, hindering the well-being of BAME students. The proposed solution involves adopting an Anti-Racism SU Manifesto, outlining expectations, procedures, and a cultural shift within the SU. The manifesto includes mandatory anti-racism training, inclusive recruitment practices, reporting procedures, consequences for racism, and community-led initiatives. It aims to promote diversity, awareness, and resources, fostering an environment committed to equality and continuous improvement. The proposed measures align with successful anti-racist projects in other universities and students' unions.

Sign up to our
Student Rights
Newsletter to be
in with a chance of
winning one of two
£20 Amazon Gift
vouchers!



[Click this link to sign up!](#)

COMMITTEE CORNER

NOTICES FOR OUR SOCIETY COMMITTEE MEMBERS



Band Christmas Concert 2022

Christmas Events 2023

If your Society is intending to host a formal event for Christmas 2023, please ensure you complete your required paperwork as soon as possible.

Templates and guidance is available on the Committee Portal - Trips and Events page.

You can also get in touch with the team at activitiesadmin@shu.ac.uk for support.

Annual Paperwork deadline

Please remember that your annual paperwork is due on 24/11/23. As the by election has now concluded, you will need to ensure your paperwork is complete and up to date to reflect your new Committee members.

- Updated and signed Constitution
- Annual Risk Assessment for your regular activity
- Annual Guest Speaker Form for your regular activity instructors



Food and Nutrition GIAG 2023

COMMITTEE CORNER

NOTICES FOR OUR SOCIETY COMMITTEE MEMBERS



EVENT PLANNING

SURGERIES

The Team are pleased to announce we are launching Event Planning Surgeries! Need help planning an event? The Societies and Events teams will be on hand to answer your questions!



SOCIETY FOCUS GROUP

The SU is carrying out a review on our Democratic Processes and the teams want to hear from you! As Societies, this review will impact you directly. To be a part of the conversation, register your interest now!



GATHER - 7TH DEC 23

Is your Society interested in performing at this years 'Festive' Gather event? Taking place on 07/12/23, get in touch with the Events team at suevents@shu.ac.uk to sign up now!

WELLBEING

Whether you are feeling lonely or need some advice, there is support available!



SELF HELP Online resources

The SU website provides access to online self help resources for different kinds of advice and wellbeing support.

Check those out here:
[Advice Self Help](#) | [Wellbeing](#)

WELLBEING CONTACT INFORMATION

Need to talk to someone?

THE STUDENT ADVICE CENTRE:

<https://www.hallamstudentsunion.com/advice>

Email: advicecentre@shu.ac.uk
Phone: 0114 225 4148

UNIVERSITY WELLBEING SERVICES:

<https://www.shu.ac.uk/wellbeing>

URGENT HELP:

<https://www.shu.ac.uk/wellbeing/urgent-help>



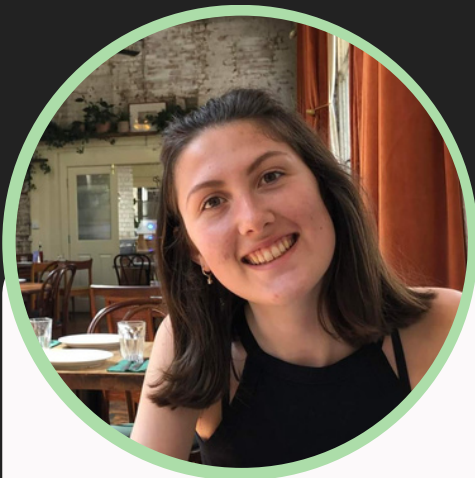
WELLBEING ACTIVITIES

Check out the [Whats On](#) page for activities to support your wellbeing.



MEET THE TEAM

Societies sit with the Student Communities and Development Team at Hallam Students' Union



TRINITY DAVIS

**Student Groups
Coordinator**
She/Her

"Hi! My name is Trinity and I work closely with our Social Societies and general activity"

t.davis@shu.ac.uk



LUCY WHEELER

**Student Communities and
Development Team Leader**
She/Her

"Hi! My name is Lucy and I work with all Societies, particularly our High Risk groups"

l.wheeler@shu.ac.uk



TAMMY BOWIE

**Student Groups
Coordinator**
She/Her

"Hi! My name is Tammy and I work closely with our Academic Societies and general activity"

t.bowie@shu.ac.uk

Contact the rest of the team at:

activitiesadmin@shu.ac.uk | suevents@shu.ac.uk | volunteering@shu.ac.uk
Student Groups | Events and Give it a Go | Volunteering

